

vtech[®]

User's Manual

Musical Fun Choo Choo™



© 2010 VTech
Printed in China
91-002486-000-006

Dear Parent,

*Ever notice the look on your baby's face when they learn something new through their own discovery? These self-accomplished moments are a parent's greatest reward. To help fulfill them, VTech® created the **Infant Learning**® series of toys.*

*These unique interactive learning toys directly respond to what children do naturally – play! Using innovative technology, these toys react to baby's interactions, making each play experience fun and unique as they learn age-appropriate concepts like first words, numbers, shapes, colors and music. More importantly, VTech®'s **Infant Learning**® toys develop baby's mental and physical abilities by inspiring, engaging and teaching.*

At VTech®, we know that a child has the ability to do great things. That's why all of our electronic learning products are uniquely designed to develop a child's mind and allow them to learn to the best of their ability. We thank you for trusting VTech® with the important job of helping your child learn and grow!

Sincerely,

Your friends at VTech®

*To learn more about the **Infant Learning**® series and other VTech® toys, visit www.vtechkids.com*

INTRODUCTION

Thank you for purchasing the **VTech® Musical Fun Choo Choo™** !

The **VTech® Musical Fun Choo Choo™** features three instrument-playing characters your child will love to learn with. The train includes eight buttons that help teach music, numbers and shapes, and the smokestack even flashes to the music. As your child pulls the train along, the pieces move to boost the fun!

3 ANIMAL
CHARACTERS

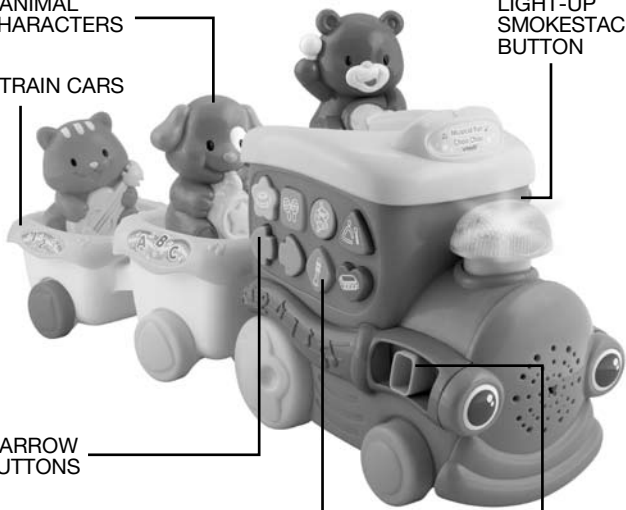
2 TRAIN CARS

LIGHT-UP
SMOKESTACK
BUTTON

2 ARROW
BUTTONS

6 SHAPE BUTTONS

MODE SELECTOR



INCLUDED IN THIS PACKAGE

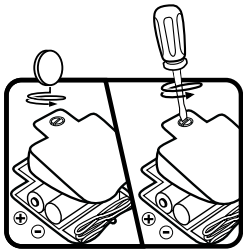
- One VTech® Musical Fun Choo Choo™
- Three animal characters
- One User's Manual

WARNING: All packing materials, such as tape, plastic sheets, wire ties and tags are not part of this toy, and should be discarded for your child's safety.

GETTING STARTED

BATTERY INSTALLATION

1. Make sure the unit is turned OFF.
2. Locate the battery cover on the bottom of the unit. Use a coin or a screwdriver to loosen the screw.
3. Install 2 new 'AA' (AM-3/LR6) batteries following the diagram inside the battery box. (The use of new alkaline batteries is recommended for maximum performance.)
4. Replace the battery cover and tighten the screw to secure.



BATTERY NOTICE

- The use of new alkaline batteries is recommended for maximum performance.
- Non-rechargeable batteries are not to be recharged.
- Rechargeable batteries are to be removed from the toy before being charged (if removable).

- Rechargeable batteries are only to be charged under adult supervision (if removable).
- Do not mix old and new batteries.
- Do not mix batteries of different types: alkaline, standard (carbon-zinc) or rechargeable (nickel-cadmium).
- Only batteries of the same or equivalent type as recommended are to be used.
- Batteries are to be inserted with the correct polarity.
- Exhausted batteries are to be removed from the toy.
- The supply terminals are not to be short-circuited.
- The toy is not to be connected to more than the recommended number of power supplies.
- Do not dispose of batteries in fire.

WE DO NOT RECOMMEND THE USE OF RECHARGEABLE BATTERIES.

PRODUCT FEATURES

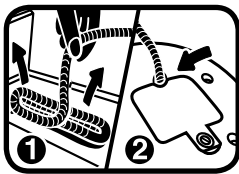
1. MODE SELECTOR

To turn the unit **ON**, slide the **MODE SELECTOR** to the **LEARNING MODE** (📖) or the **MUSIC MODE** (🎵) position. To turn the unit **OFF**, slide the **MODE SELECTOR** to the **OFF** (OFF) position.



2. PULL CORD

To convert the unit from a push toy to a pull toy, remove the pull cord from the battery compartment and thread it through the eyelet on the bottom of the unit. For your child's safety, we suggest you store the pull cord in the compartment until your child is walking.



3. AUTOMATIC SHUT-OFF

To preserve battery life, the **VTech® Musical Fun Choo Choo™** will automatically power-down after approximately 12 seconds without input. The unit can be turned on again by pressing any button or putting the animal characters on the engine.



ACTIVITIES

1. Slide the **MODE SELECTOR** to turn the unit ON. You will hear fun sounds, a phrase and a song or animals singing. The light will flash with the sounds.



2. Place the **ANIMAL CHARACTERS** on the train's engine to hear phrases, short tunes, fun sounds and melodies. In Learning Mode, putting the animal characters on the engine will tell you which instrument the animal is playing. It will also activate short tunes. In Music Mode, putting the animal characters on the engine will teach instruments and play songs using that instrument. When a melody is started by pushing a shape button or pulling the train, putting the animal characters on the engine will play that melody in a specific style of music, or you'll hear the melody sung by the animal. The light will flash with the sounds.



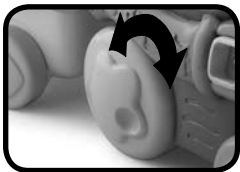
3. Press the **SHAPE BUTTONS** to hear fun sounds, melodies, short tunes and phrases. In Learning Mode, pressing the buttons will teach instruments and shapes. In Music Mode, pressing the buttons will play melodies and fun sounds and also teach instruments. When melodies are playing, pressing buttons will add fun sounds and phrases over the music. The light will flash with the sounds.



4. Press the **ARROW BUTTONS** to hear fun sounds and up-beat short tunes. The light will flash with the sounds.



5. Roll the **TRAIN** to hear a song, melodies and or phrases. In both modes, rolling the train will activate a melody. Pull the train faster to speed up the melody. The light will flash with the sounds.



6. If there is no input for approximately 6 seconds, you will hear a song, a phrase, a fun sound or an upbeat melody. If there continues to be no input after another 6 seconds, you will hear a short tune and the unit will power down. The unit can be turned on again by pressing any button or putting the animal characters on the engine.

MELODY LIST

The Entertainer

Yankee Doodle

Sailing, Sailing

I've Been Working on the Railroad

London Bridge

Three Blind Mice

SUNG SONG 1 LYRICS

All aboard the train for learning,

We'll have so much fun!

Learning, singing and playing,

Keep rolling 'til we're done!

CARE & MAINTENANCE

1. Keep the unit clean by wiping it with a slightly damp cloth.
2. Keep the unit out of direct sunlight and away from any direct heat source.
3. Remove the batteries when the unit is not in use for an extended period of time.
4. Do not drop the unit on hard surfaces and do not expose the unit to moisture or water.

TROUBLESHOOTING

If for some reason the program/activity stops working or malfunctions, please follow these steps:

1. Please turn the unit **OFF**.
2. Interrupt the power supply by removing the batteries.
3. Let the unit stand for a few minutes, then replace the batteries.
4. Turn the unit **ON**. The unit should now be ready to play again.
5. If the product still does not work, replace with a new set of batteries.

For information on this product's warranty, please call our Consumer Services Department at 1-800-521-2010 in the U.S. or 1-877-352-8697 in Canada.

IMPORTANT NOTE:

Creating and developing Infant Learning products is accompanied by a responsibility that we at **VTech®** take very seriously. We make every effort to ensure the accuracy of the information, which forms the value of our products. However, errors sometimes can occur. It is important for you to know that we stand behind our products and encourage you to call our Consumer Services Department on at 1-800-521-2010 in the U.S. or 1-877-352-8697 in Canada, with any problems and/or suggestions that you might have. A service representative will be happy to help you.

FCC Notice:

This equipment has been tested and found to comply with the limits for a Class B digital device, pursuant to Part 15 of the FCC Rules. These limits are designed to provide reasonable protection against harmful interference in a residential installation. This equipment generates, uses and can radiate radio frequency energy and, if not

installed and used in accordance with the instructions, may cause harmful interference to radio communications. However, there is no guarantee that interference will not occur in a particular installation. If this equipment does cause harmful interference to radio or television reception, which can be determined by turning the equipment off and on, the user is encouraged to try to correct the interference by one or more of the following measures:

- Reorient or relocate the receiving antenna
- Increase the separation between the equipment and receiver
- Connect the equipment into an outlet on a circuit different from that to which the receiver is connected
- Consult the dealer or an experienced radio/TV technician for help

Caution: changes or modifications not expressly approved by the party responsible for compliance could void the user's authority to operate the equipment.

THIS DEVICE COMPLIES WITH PART 15 OF THE FCC RULES. OPERATION IS SUBJECT TO THE FOLLOWING TWO CONDITIONS: (1) THIS DEVICE MAY NOT CAUSE HARMFUL INTERFERENCE, AND (2) THIS DEVICE MUST ACCEPT ANY INTERFERENCE RECEIVED, INCLUDING INTERFERENCE THAT MAY CAUSE UNDESIRE OPERATION.

THIS CLASS B DIGITAL APPARATUS COMPLIES WITH CANADIAN ICES-003.

CET APPAREIL NUMÉRIQUE DE LA CLASSE B EST CONFORME À LA NORME NMB-003 DU CANADA.



CLASS 1
LED PRODUCT